

DEAL POST TEST 2019-20 - SCHOOL REPORT CARD

KARAIKAL
CEO

34040600401 GHS - THIRUVETTAKUDY

All Grades represent the following scorings in % *

GRADE A - >75	* School Status Grade represents the total enrollment of the school (Not %)
GRADE B - 51 TO 75	
GRADE C - 26 TO 50	
GRADE D - 10 TO 25	
GRADE E - <10	

Note: The Values given in the brackets denote the difference between the Pre and Post Test Scores.
(For Example: If the Pre-Test Grade is 'C' and the Post-Test Grade is 'A', then the progress is +2)

SCHOOL GRADE - BB

Status Gr. B (0) Performance Gr. B(+1)

OVERALL PERFORMANCE GRADES

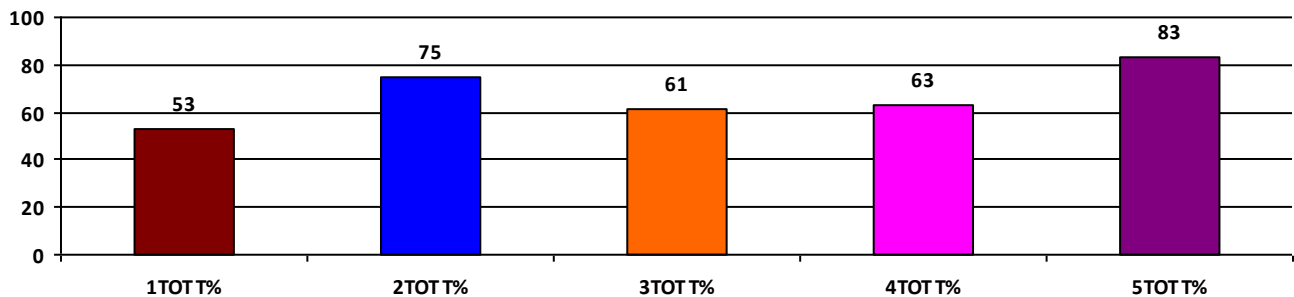
	Boys	Girls	Total
SCHOOL GR.	B	B	B
Diff. to Pre-Test	(+1)	(+1)	(+1)
DIST. GR.	B	B	B
STATE GR.	B	B	B

CLASSWISE APPEARED

DETAILS	I STD	II STD	III STD	IV STD	V STD
BOYS	6	6	10	11	7
GIRLS	5	5	7	9	5
TOTAL	11	11	17	20	12
Diff. to Pre-Test	(+1)	(+3)	(+2)	(+2)	(+1)

CLASSWISE PERFORMANCE GRADES (% of marks)

DETAILS	I STD	II STD	III STD	IV STD	V STD
%	53	75	61	63	83
SCHOOL GR.	B	B	B	B	A
Diff. to Pre-Test	(0)	(0)	(+1)	(0)	(+1)
DIST. GR.	B	B	B	B	B
STATE GR.	A	B	B	B	B



GRADEWISE PERFORMANCE (NO. OF STUDENTS)

ENGLISH	1 Std	2 Std	3 Std	4 Std	5 Std	TAMIL	1 Std	2 Std	3 Std	4 Std	5 Std
GR. A	0	7	0	5	7	GR. A	1	7	6	10	11
GR. B	5	2	14	10	4	GR. B	8	2	9	6	1
GR. C	5	2	3	2	1	GR. C	2	2	2	0	0
GR. D	1	0	0	2	0	GR. D	0	0	0	4	0
GR. E	0	0	0	1	0	GR. E	0	0	0	0	0

DEAL POST TEST 2019-20 - SCHOOL REPORT CARD

KARAIKAL
CEO

34040601303 CES - DEITHA STREET, KARAIKAL

All Grades represent the following scorings in % *

GRADE A - >75	
GRADE B - 51 TO 75	* School Status Grade
GRADE C - 26 TO 50	represents the total
GRADE D - 10 TO 25	enrollment of the
GRADE E - <10	school (Not %)

Note: The Values given in the brackets denote the difference between the Pre and Post Test Scores.
(For Example: If the Pre-Test Grade is 'C' and the Post-Test Grade is 'A', then the progress is +2)

SCHOOL GRADE - EC

Status Gr. E (0)	Performance Gr. C (0)
------------------	-----------------------

OVERALL PERFORMANCE GRADES

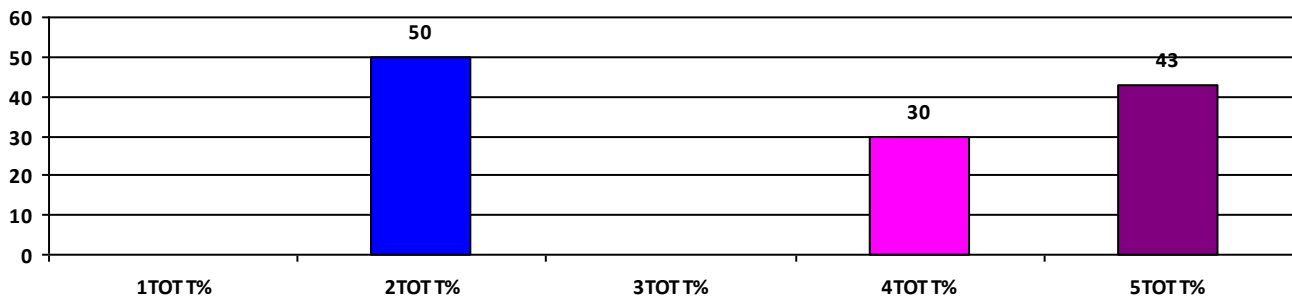
	Boys	Girls	Total
SCHOOL GR.	C	C	C
Diff. to Pre-Test	(0)	(0)	(0)
DIST. GR.	B	B	B
STATE GR.	B	B	B

CLASSWISE APPEARED

DETAILS	I STD	II STD	III STD	IV STD	V STD
BOYS	0	0	0	1	2
GIRLS	0	1	0	0	1
TOTAL	0	1	0	1	3
Diff. to Pre-Test	(-1)	(0)	(0)	(0)	(-1)

CLASSWISE PERFORMANCE GRADES (% of marks)

DETAILS	I STD	II STD	III STD	IV STD	V STD
%	NA	50	NA	30	43
SCHOOL GR.	NA	C	NA	C	C
Diff. to Pre-Test	(+8)	(0)	(+8)	(+1)	(0)
DIST. GR.	B	B	B	B	B
STATE GR.	A	B	B	B	B



GRADEWISE PERFORMANCE (NO. OF STUDENTS)

ENGLISH	1 Std	2 Std	3 Std	4 Std	5 Std	TAMIL	1 Std	2 Std	3 Std	4 Std	5 Std
GR. A	0	0	0	0	1	GR. A	0	0	0	0	1
GR. B	0	0	0	0	0	GR. B	0	1	0	0	0
GR. C	0	1	0	1	1	GR. C	0	0	0	1	0
GR. D	0	0	0	0	1	GR. D	0	0	0	0	2
GR. E	0	0	0	0	0	GR. E	0	0	0	0	0

DEAL POST TEST 2019-20 - SCHOOL REPORT CARD

KARAIKAL
CEO

34040601502 GHS - KOVILPATHU

All Grades represent the following scorings in % *

GRADE A - >75	* School Status Grade represents the total enrollment of the school (Not %)
GRADE B - 51 TO 75	
GRADE C - 26 TO 50	
GRADE D - 10 TO 25	
GRADE E - <10	

Note: The Values given in the brackets denote the difference between the Pre and Post Test Scores.
(For Example: If the Pre-Test Grade is 'C' and the Post-Test Grade is 'A', then the progress is +2)

SCHOOL GRADE - DC

Status Gr. D (0)	Performance Gr. C (0)
------------------	-----------------------

OVERALL PERFORMANCE GRADES

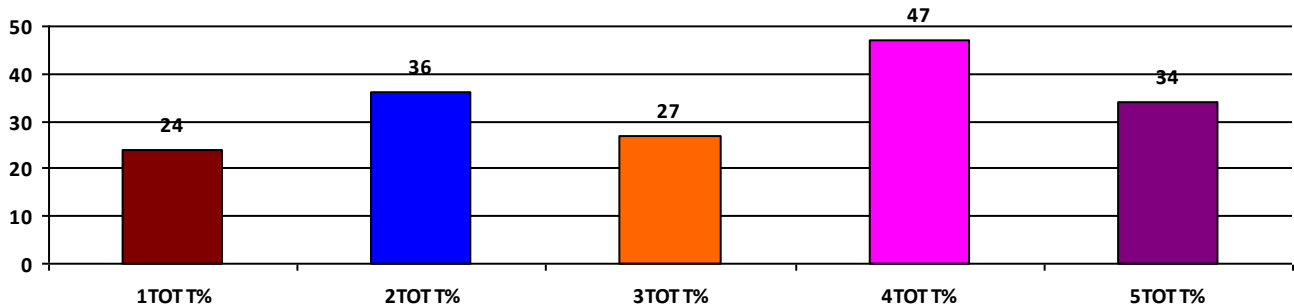
	Boys	Girls	Total
SCHOOL GR.	C	C	C
Diff. to Pre-Test	(0)	(0)	(0)
DIST. GR.	B	B	B
STATE GR.	B	B	B

CLASSWISE APPEARED

DETAILS	I STD	II STD	III STD	IV STD	V STD
BOYS	0	1	1	0	3
GIRLS	2	1	1	3	2
TOTAL	2	2	2	3	5
Diff. to Pre-Test	(-2)	(0)	(-2)	(0)	(0)

CLASSWISE PERFORMANCE GRADES (% of marks)

DETAILS	I STD	II STD	III STD	IV STD	V STD
%	24	36	27	47	34
SCHOOL GR.	D	C	C	C	C
Diff. to Pre-Test	(-1)	(0)	(+1)	(0)	(0)
DIST. GR.	B	B	B	B	B
STATE GR.	A	B	B	B	B



GRADEWISE PERFORMANCE (NO. OF STUDENTS)

ENGLISH	1 Std	2 Std	3 Std	4 Std	5 Std	TAMIL	1 Std	2 Std	3 Std	4 Std	5 Std
GR. A	0	0	0	0	0	GR. A	0	0	0	1	0
GR. B	0	0	0	1	0	GR. B	1	1	1	1	2
GR. C	0	0	0	1	2	GR. C	1	1	0	0	1
GR. D	0	2	2	1	3	GR. D	0	0	1	1	2
GR. E	2	0	0	0	0	GR. E	0	0	0	0	0

DEAL POST TEST 2019-20 - SCHOOL REPORT CARD

KARAIKAL
CEO

34040603802 GMS - PUDUTHURAI

All Grades represent the following scorings in % *

GRADE A - >75	* School Status Grade represents the total enrollment of the school (Not %)
GRADE B - 51 TO 75	
GRADE C - 26 TO 50	
GRADE D - 10 TO 25	
GRADE E - <10	

Note: The Values given in the brackets denote the difference between the Pre and Post Test Scores.
(For Example: If the Pre-Test Grade is 'C' and the Post-Test Grade is 'A', then the progress is +2)

SCHOOL GRADE - AB

Status Gr. A (0)	Performance Gr. B (0)
------------------	-----------------------

OVERALL PERFORMANCE GRADES

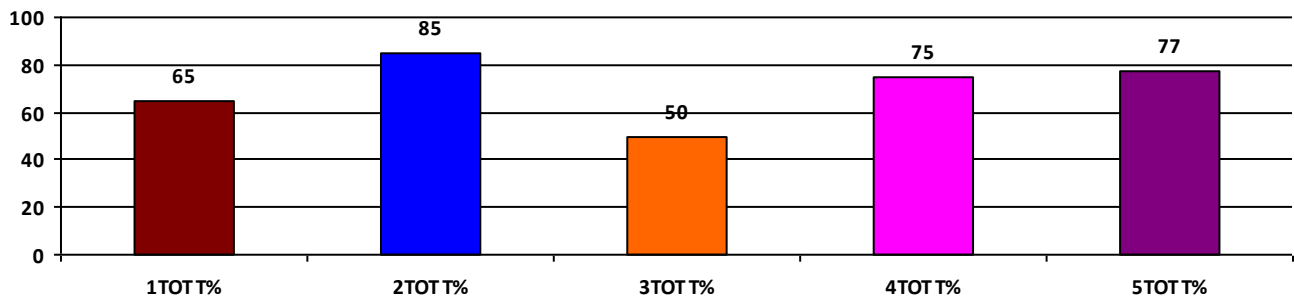
	Boys	Girls	Total
SCHOOL GR.	B	B	B
Diff. to Pre-Test	(0)	(0)	(0)
DIST. GR.	B	B	B
STATE GR.	B	B	B

CLASSWISE APPEARED

DETAILS	I STD	II STD	III STD	IV STD	V STD
BOYS	5	6	4	6	5
GIRLS	5	14	12	4	6
TOTAL	10	20	16	10	11
Diff. to Pre-Test	(-1)	(-1)	(-3)	(-1)	(-1)

CLASSWISE PERFORMANCE GRADES (% of marks)

DETAILS	I STD	II STD	III STD	IV STD	V STD
%	65	85	50	75	77
SCHOOL GR.	B	A	C	B	A
Diff. to Pre-Test	(0)	(+1)	(-1)	(-1)	(+1)
DIST. GR.	B	B	B	B	B
STATE GR.	A	B	B	B	B



GRADEWISE PERFORMANCE (NO. OF STUDENTS)

ENGLISH	1 Std	2 Std	3 Std	4 Std	5 Std	TAMIL	1 Std	2 Std	3 Std	4 Std	5 Std
GR. A	3	16	1	2	7	GR. A	6	15	5	7	8
GR. B	4	2	5	6	3	GR. B	2	3	5	3	2
GR. C	2	1	6	2	1	GR. C	2	1	3	0	1
GR. D	0	0	3	0	0	GR. D	0	0	3	0	0
GR. E	1	1	1	0	0	GR. E	0	1	0	0	0

DEAL POST TEST 2019-20 - SCHOOL REPORT CARD

KARAIKAL
CEO

34040607001 **GMS - SURAKUDY**

All Grades represent the following scorings in % *

GRADE A - >75	* School Status Grade represents the total enrollment of the school (Not %)
GRADE B - 51 TO 75	
GRADE C - 26 TO 50	
GRADE D - 10 TO 25	
GRADE E - <10	

Note: The Values given in the brackets denote the difference between the Pre and Post Test Scores.
(For Example: If the Pre-Test Grade is 'C' and the Post-Test Grade is 'A', then the progress is +2)

SCHOOL GRADE - AB

Status Gr. A (0)	Performance Gr. B (0)
------------------	-----------------------

OVERALL PERFORMANCE GRADES

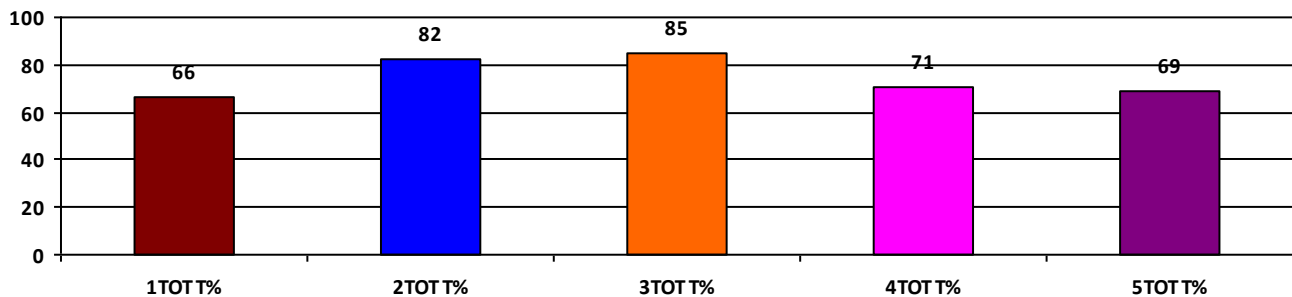
	Boys	Girls	Total
SCHOOL GR.	B	A	B
Diff. to Pre-Test	(0)	(+1)	(0)
DIST. GR.	B	B	B
STATE GR.	B	B	B

CLASSWISE APPEARED

DETAILS	I STD	II STD	III STD	IV STD	V STD
BOYS	2	7	4	6	14
GIRLS	4	8	6	9	7
TOTAL	6	15	10	15	21
Diff. to Pre-Test	(-5)	(-3)	(0)	(-1)	(-2)

CLASSWISE PERFORMANCE GRADES (% of marks)

DETAILS	I STD	II STD	III STD	IV STD	V STD
%	66	82	85	71	69
SCHOOL GR.	B	A	A	B	B
Diff. to Pre-Test	(+1)	(+1)	(0)	(0)	(0)
DIST. GR.	B	B	B	B	B
STATE GR.	A	B	B	B	B



GRADEWISE PERFORMANCE (NO. OF STUDENTS)

ENGLISH	1 Std	2 Std	3 Std	4 Std	5 Std	TAMIL	1 Std	2 Std	3 Std	4 Std	5 Std
GR. A	0	15	7	6	9	GR. A	2	7	8	10	13
GR. B	5	0	3	4	7	GR. B	4	8	2	1	4
GR. C	1	0	0	4	2	GR. C	0	0	0	3	2
GR. D	0	0	0	1	3	GR. D	0	0	0	1	2
GR. E	0	0	0	0	0	GR. E	0	0	0	0	0

DEAL POST TEST 2019-20 - SCHOOL REPORT CARD

KARAIKAL
CEO

34040607004 **GMS - KARUKKANGUDY**

All Grades represent the following scorings in % *

GRADE A - >75	* School Status Grade represents the total enrollment of the school (Not %)
GRADE B - 51 TO 75	
GRADE C - 26 TO 50	
GRADE D - 10 TO 25	
GRADE E - <10	

Note: The Values given in the brackets denote the difference between the Pre and Post Test Scores.
(For Example: If the Pre-Test Grade is 'C' and the Post-Test Grade is 'A', then the progress is +2)

SCHOOL GRADE - CA

Status Gr. C (0) Performance Gr. A(+1)

OVERALL PERFORMANCE GRADES

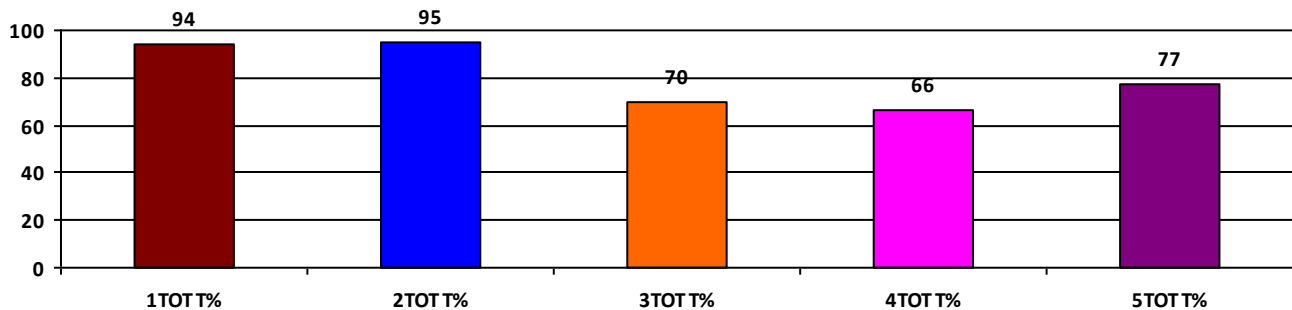
	Boys	Girls	Total
SCHOOL GR.	B	A	A
Diff. to Pre-Test	(0)	(+1)	(+1)
DIST. GR.	B	B	B
STATE GR.	B	B	B

CLASSWISE APPEARED

DETAILS	I STD	II STD	III STD	IV STD	V STD
BOYS	2	3	4	3	5
GIRLS	3	3	7	4	3
TOTAL	5	6	11	7	8
Diff. to Pre-Test	(0)	(0)	(0)	(-1)	(0)

CLASSWISE PERFORMANCE GRADES (% of marks)

DETAILS	I STD	II STD	III STD	IV STD	V STD
%	94	95	70	66	77
SCHOOL GR.	A	A	B	B	A
Diff. to Pre-Test	(0)	(+1)	(0)	(+1)	(+1)
DIST. GR.	B	B	B	B	B
STATE GR.	A	B	B	B	B



GRADEWISE PERFORMANCE (NO. OF STUDENTS)

ENGLISH	1 Std	2 Std	3 Std	4 Std	5 Std	TAMIL	1 Std	2 Std	3 Std	4 Std	5 Std
GR. A	5	6	4	1	5	GR. A	5	6	6	5	5
GR. B	0	0	5	4	0	GR. B	0	0	4	1	2
GR. C	0	0	1	0	2	GR. C	0	0	1	1	1
GR. D	0	0	1	2	1	GR. D	0	0	0	0	0
GR. E	0	0	0	0	0	GR. E	0	0	0	0	0

DEAL POST TEST 2019-20 - SCHOOL REPORT CARD

KARAIKAL
CEO

34040607503 **GMS - NALLAMBAL**

All Grades represent the following scorings in % *

GRADE A - >75	* School Status Grade represents the total enrollment of the school (Not %)
GRADE B - 51 TO 75	
GRADE C - 26 TO 50	
GRADE D - 10 TO 25	
GRADE E - <10	

Note: The Values given in the brackets denote the difference between the Pre and Post Test Scores.
(For Example: If the Pre-Test Grade is 'C' and the Post-Test Grade is 'A', then the progress is +2)

SCHOOL GRADE - BC

Status Gr. B (0)	Performance Gr. C (0)
------------------	-----------------------

OVERALL PERFORMANCE GRADES

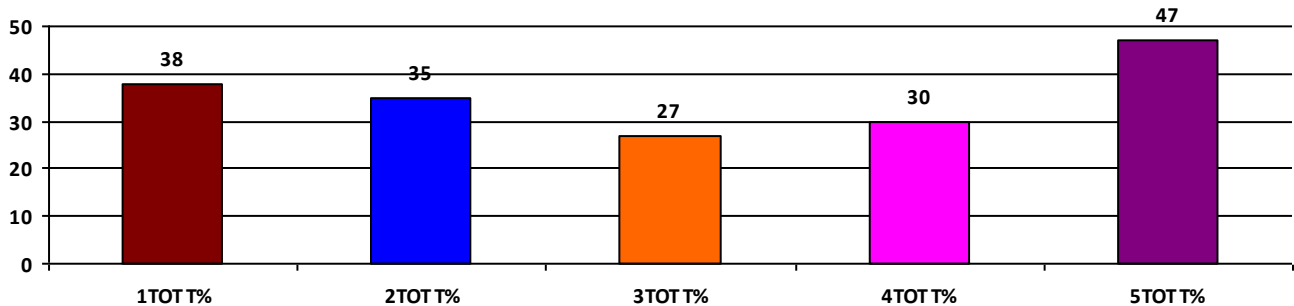
	Boys	Girls	Total
SCHOOL GR.	C	C	C
Diff. to Pre-Test	(+1)	(0)	(0)
DIST. GR.	B	B	B
STATE GR.	B	B	B

CLASSWISE APPEARED

DETAILS	I STD	II STD	III STD	IV STD	V STD
BOYS	2	7	3	7	4
GIRLS	7	9	2	4	10
TOTAL	9	16	5	11	14
Diff. to Pre-Test	(+1)	(+2)	(-4)	(-1)	(-2)

CLASSWISE PERFORMANCE GRADES (% of marks)

DETAILS	I STD	II STD	III STD	IV STD	V STD
%	38	35	27	30	47
SCHOOL GR.	C	C	C	C	C
Diff. to Pre-Test	(0)	(0)	(+1)	(0)	(+1)
DIST. GR.	B	B	B	B	B
STATE GR.	A	B	B	B	B



GRADEWISE PERFORMANCE (NO. OF STUDENTS)

ENGLISH	1 Std	2 Std	3 Std	4 Std	5 Std	TAMIL	1 Std	2 Std	3 Std	4 Std	5 Std
GR. A	0	0	0	0	1	GR. A	2	1	0	0	1
GR. B	2	2	0	1	5	GR. B	3	6	1	3	7
GR. C	2	7	2	2	3	GR. C	1	1	2	4	4
GR. D	3	6	3	8	4	GR. D	2	6	1	3	2
GR. E	2	1	0	0	1	GR. E	1	2	1	1	0

DEAL POST TEST 2019-20 - SCHOOL REPORT CARD

KARAIKAL
CEO

34040607705 RM A.S.PACKIRISAMY PILLAI GHS, KARAIKALMEDU

All Grades represent the following scorings in % *

GRADE A - >75	* School Status Grade represents the total enrollment of the school (Not %)
GRADE B - 51 TO 75	
GRADE C - 26 TO 50	
GRADE D - 10 TO 25	
GRADE E - <10	

Note: The Values given in the brackets denote the difference between the Pre and Post Test Scores.
(For Example: If the Pre-Test Grade is 'C' and the Post-Test Grade is 'A', then the progress is +2)

SCHOOL GRADE - AB

Status Gr. A (0) Performance Gr. B(+1)

OVERALL PERFORMANCE GRADES

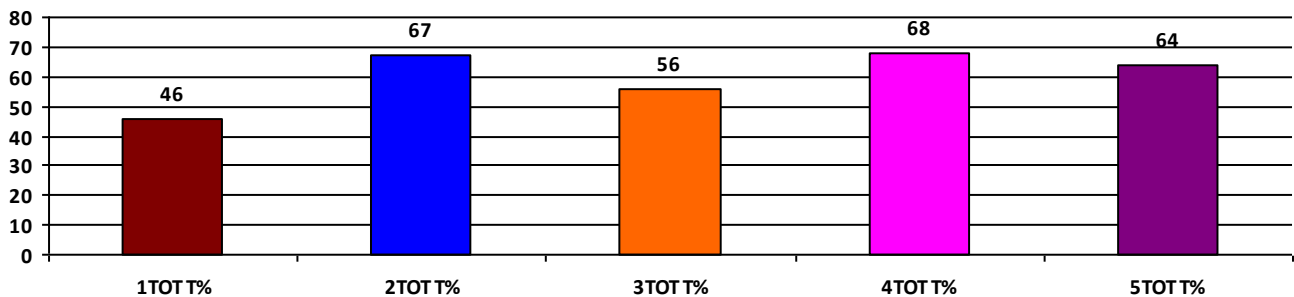
	Boys	Girls	Total
SCHOOL GR.	B	B	B
Diff. to Pre-Test	(0)	(+1)	(+1)
DIST. GR.	B	B	B
STATE GR.	B	B	B

CLASSWISE APPEARED

DETAILS	I STD	II STD	III STD	IV STD	V STD
BOYS	6	2	8	11	13
GIRLS	9	7	9	7	10
TOTAL	15	9	17	18	23
Diff. to Pre-Test	(+1)	(-1)	(+2)	(+3)	(0)

CLASSWISE PERFORMANCE GRADES (% of marks)

DETAILS	I STD	II STD	III STD	IV STD	V STD
%	46	67	56	68	64
SCHOOL GR.	C	B	B	B	B
Diff. to Pre-Test	(-1)	(+1)	(+1)	(0)	(+1)
DIST. GR.	B	B	B	B	B
STATE GR.	A	B	B	B	B



GRADEWISE PERFORMANCE (NO. OF STUDENTS)

ENGLISH	1 Std	2 Std	3 Std	4 Std	5 Std	TAMIL	1 Std	2 Std	3 Std	4 Std	5 Std
GR. A	0	4	3	8	9	GR. A	2	4	5	8	5
GR. B	5	3	7	7	8	GR. B	6	3	3	5	11
GR. C	7	1	5	2	5	GR. C	6	2	8	4	5
GR. D	2	1	2	0	1	GR. D	0	0	1	0	2
GR. E	1	0	0	1	0	GR. E	1	0	0	1	0

DEAL POST TEST 2019-20 - SCHOOL REPORT CARD

KARAIKAL
CEO

34040607902 GHS - SETHUR

All Grades represent the following scorings in % *

GRADE A - >75	
GRADE B - 51 TO 75	* School Status Grade
GRADE C - 26 TO 50	represents the total
GRADE D - 10 TO 25	enrollment of the
GRADE E - <10	school (Not %)

Note: The Values given in the brackets denote the difference between the Pre and Post Test Scores.
(For Example: If the Pre-Test Grade is 'C' and the Post-Test Grade is 'A', then the progress is +2)

SCHOOL GRADE - BB

Status Gr. B (0) Performance Gr. B (0)

OVERALL PERFORMANCE GRADES

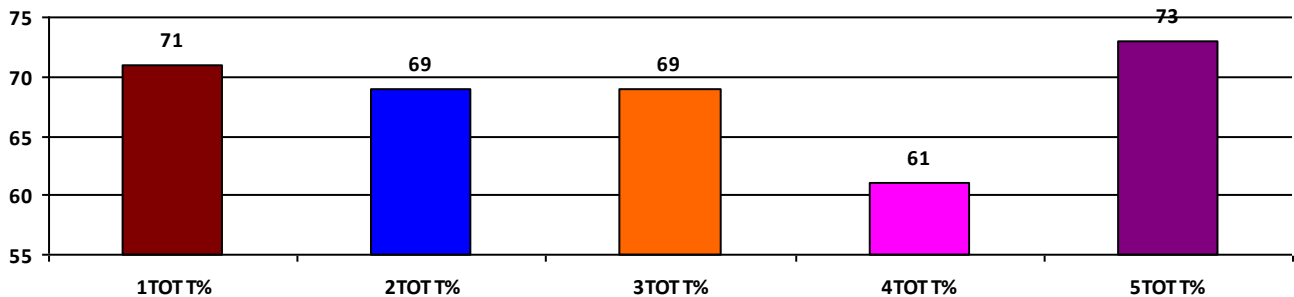
	Boys	Girls	Total
SCHOOL GR.	B	B	B
Diff. to Pre-Test	(+1)	(0)	(0)
DIST. GR.	B	B	B
STATE GR.	B	B	B

CLASSWISE APPEARED

DETAILS	I STD	II STD	III STD	IV STD	V STD
BOYS	6	5	3	5	8
GIRLS	12	6	6	10	7
TOTAL	18	11	9	15	15
Diff. to Pre-Test	(-2)	(-1)	(-2)	(+1)	(0)

CLASSWISE PERFORMANCE GRADES (% of marks)

DETAILS	I STD	II STD	III STD	IV STD	V STD
%	71	69	69	61	73
SCHOOL GR.	B	B	B	B	B
Diff. to Pre-Test	(0)	(+1)	(+1)	(+1)	(0)
DIST. GR.	B	B	B	B	B
STATE GR.	A	B	B	B	B



GRADEWISE PERFORMANCE (NO. OF STUDENTS)

ENGLISH	1 Std	2 Std	3 Std	4 Std	5 Std	TAMIL	1 Std	2 Std	3 Std	4 Std	5 Std
GR. A	7	3	1	0	6	GR. A	11	8	8	7	7
GR. B	9	6	6	7	8	GR. B	6	1	0	7	7
GR. C	1	1	2	8	0	GR. C	0	1	0	1	0
GR. D	1	0	0	0	1	GR. D	1	1	1	0	1
GR. E	0	1	0	0	0	GR. E	0	0	0	0	0

DEAL POST TEST 2019-20 - SCHOOL REPORT CARD

KARAIKAL
CEO

34040608401 **GMS - SELLUR**

All Grades represent the following scorings in % *

GRADE A - >75	* School Status Grade represents the total enrollment of the school (Not %)
GRADE B - 51 TO 75	
GRADE C - 26 TO 50	
GRADE D - 10 TO 25	
GRADE E - <10	

Note: The Values given in the brackets denote the difference between the Pre and Post Test Scores.
(For Example: If the Pre-Test Grade is 'C' and the Post-Test Grade is 'A', then the progress is +2)

SCHOOL GRADE - AB

Status Gr. A (0)	Performance Gr. B(+1)
------------------	-----------------------

OVERALL PERFORMANCE GRADES

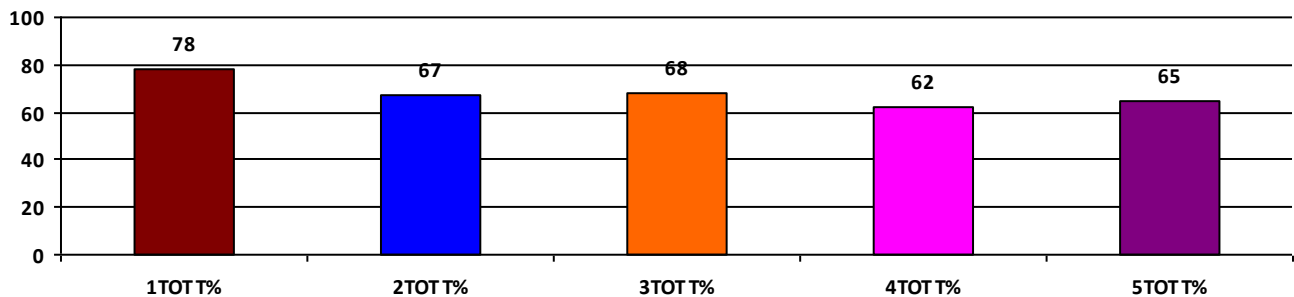
	Boys	Girls	Total
SCHOOL GR.	B	B	B
Diff. to Pre-Test	(+1)	(+1)	(+1)
DIST. GR.	B	B	B
STATE GR.	B	B	B

CLASSWISE APPEARED

DETAILS	I STD	II STD	III STD	IV STD	V STD
BOYS	6	7	6	5	8
GIRLS	5	5	8	13	11
TOTAL	11	12	14	18	19
Diff. to Pre-Test	(+1)	(-2)	(-3)	(-1)	(0)

CLASSWISE PERFORMANCE GRADES (% of marks)

DETAILS	I STD	II STD	III STD	IV STD	V STD
%	78	67	68	62	65
SCHOOL GR.	A	B	B	B	B
Diff. to Pre-Test	(+2)	(+1)	(+1)	(+1)	(+1)
DIST. GR.	B	B	B	B	B
STATE GR.	A	B	B	B	B



GRADEWISE PERFORMANCE (NO. OF STUDENTS)

ENGLISH	1 Std	2 Std	3 Std	4 Std	5 Std	TAMIL	1 Std	2 Std	3 Std	4 Std	5 Std
GR. A	5	3	2	4	7	GR. A	8	7	6	11	8
GR. B	5	5	7	7	7	GR. B	2	3	7	4	4
GR. C	1	3	4	4	4	GR. C	1	2	1	1	6
GR. D	0	1	1	3	0	GR. D	0	0	0	2	1
GR. E	0	0	0	0	1	GR. E	0	0	0	0	0

DEAL POST TEST 2019-20 - SCHOOL REPORT CARD

KARAIKAL
CEO

34040608901 **GMS - PONBETHY**

All Grades represent the following scorings in % *

GRADE A - >75	* School Status Grade represents the total enrollment of the school (Not %)
GRADE B - 51 TO 75	
GRADE C - 26 TO 50	
GRADE D - 10 TO 25	
GRADE E - <10	

Note: The Values given in the brackets denote the difference between the Pre and Post Test Scores.
(For Example: If the Pre-Test Grade is 'C' and the Post-Test Grade is 'A', then the progress is +2)

SCHOOL GRADE - CB

Status Gr. C (0) Performance Gr. B(+1)

OVERALL PERFORMANCE GRADES

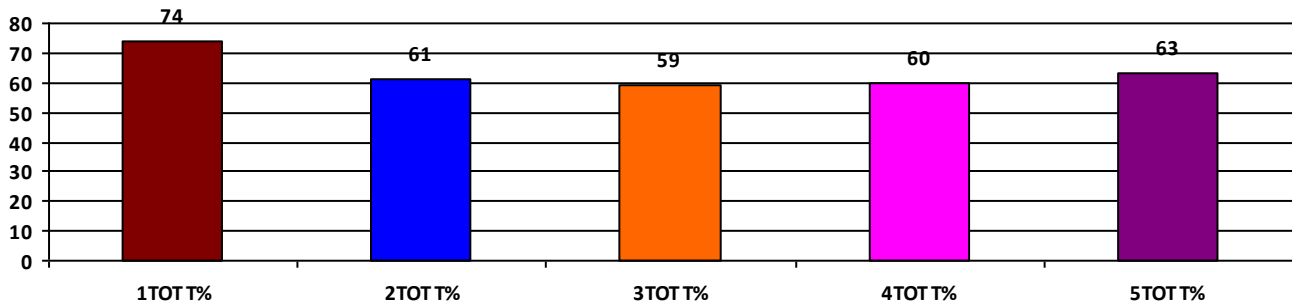
	Boys	Girls	Total
SCHOOL GR.	B	B	B
Diff. to Pre-Test	(+1)	(+1)	(+1)
DIST. GR.	B	B	B
STATE GR.	B	B	B

CLASSWISE APPEARED

DETAILS	I STD	II STD	III STD	IV STD	V STD
BOYS	3	3	7	4	4
GIRLS	4	4	2	3	2
TOTAL	7	7	9	7	6
Diff. to Pre-Test	(-2)	(0)	(+2)	(0)	(+1)

CLASSWISE PERFORMANCE GRADES (% of marks)

DETAILS	I STD	II STD	III STD	IV STD	V STD
%	74	61	59	60	63
SCHOOL GR.	B	B	B	B	B
Diff. to Pre-Test	(+1)	(+1)	(+1)	(+1)	(+2)
DIST. GR.	B	B	B	B	B
STATE GR.	A	B	B	B	B



GRADEWISE PERFORMANCE (NO. OF STUDENTS)

ENGLISH	1 Std	2 Std	3 Std	4 Std	5 Std	TAMIL	1 Std	2 Std	3 Std	4 Std	5 Std
GR. A	5	0	0	0	0	GR. A	3	1	4	4	3
GR. B	1	6	6	5	4	GR. B	4	4	2	1	2
GR. C	1	1	2	2	2	GR. C	0	2	2	1	1
GR. D	0	0	1	0	0	GR. D	0	0	1	1	0
GR. E	0	0	0	0	0	GR. E	0	0	0	0	0

DEAL POST TEST 2019-20 - SCHOOL REPORT CARD

KARAIKAL
CEO

34040609602 **GMS - VADAMATTAM**

All Grades represent the following scorings in % *

GRADE A - >75	* School Status Grade represents the total enrollment of the school (Not %)
GRADE B - 51 TO 75	
GRADE C - 26 TO 50	
GRADE D - 10 TO 25	
GRADE E - <10	

Note: The Values given in the brackets denote the difference between the Pre and Post Test Scores.
(For Example: If the Pre-Test Grade is 'C' and the Post-Test Grade is 'A', then the progress is +2)

SCHOOL GRADE - CB

Status Gr. C (0) Performance Gr. B (0)

OVERALL PERFORMANCE GRADES

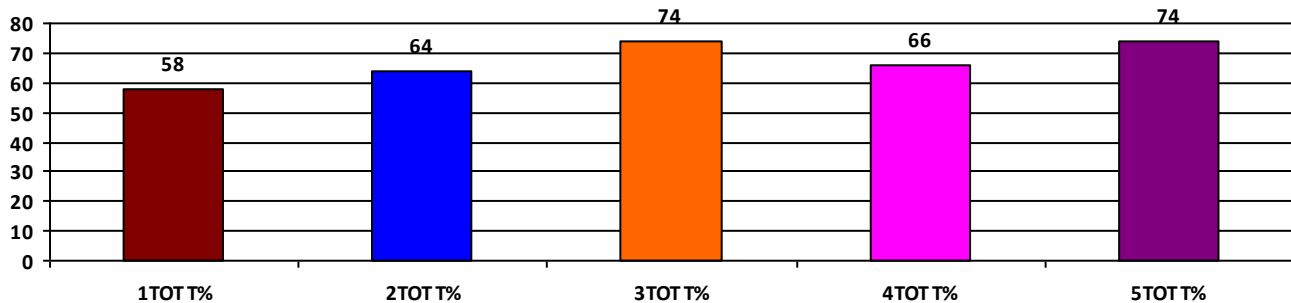
	Boys	Girls	Total
SCHOOL GR.	B	B	B
Diff. to Pre-Test	(0)	(0)	(0)
DIST. GR.	B	B	B
STATE GR.	B	B	B

CLASSWISE APPEARED

DETAILS	I STD	II STD	III STD	IV STD	V STD
BOYS	2	3	2	2	6
GIRLS	3	3	5	4	6
TOTAL	5	6	7	6	12
Diff. to Pre-Test	(-1)	(-1)	(+1)	(0)	(+1)

CLASSWISE PERFORMANCE GRADES (% of marks)

DETAILS	I STD	II STD	III STD	IV STD	V STD
%	58	64	74	66	74
SCHOOL GR.	B	B	B	B	B
Diff. to Pre-Test	(0)	(0)	(0)	(0)	(0)
DIST. GR.	B	B	B	B	B
STATE GR.	A	B	B	B	B



GRADEWISE PERFORMANCE (NO. OF STUDENTS)

ENGLISH	1 Std	2 Std	3 Std	4 Std	5 Std	TAMIL	1 Std	2 Std	3 Std	4 Std	5 Std
GR. A	1	0	2	1	7	GR. A	3	3	7	3	9
GR. B	2	3	4	2	2	GR. B	0	3	0	3	0
GR. C	0	2	1	3	3	GR. C	2	0	0	0	2
GR. D	2	1	0	0	0	GR. D	0	0	0	0	1
GR. E	0	0	0	0	0	GR. E	0	0	0	0	0

DEAL POST TEST 2019-20 - SCHOOL REPORT CARD

KARAIKAL
CEO

34040609701 GMS - MELAKASAKUDY

All Grades represent the following scorings in % *

GRADE A - >75	
GRADE B - 51 TO 75	* School Status Grade
GRADE C - 26 TO 50	represents the total
GRADE D - 10 TO 25	enrollment of the
GRADE E - <10	school (Not %)

Note: The Values given in the brackets denote the difference between the Pre and Post Test Scores.
(For Example: If the Pre-Test Grade is 'C' and the Post-Test Grade is 'A', then the progress is +2)

SCHOOL GRADE - BB

Status Gr. B (0) Performance Gr. B (0)

OVERALL PERFORMANCE GRADES

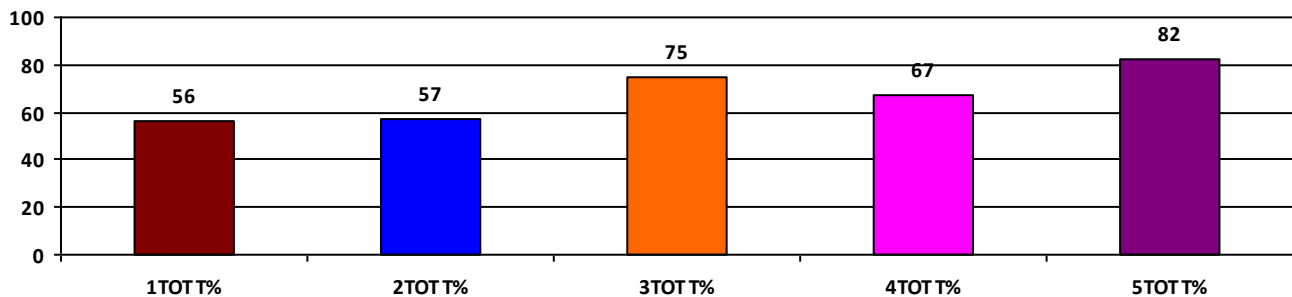
	Boys	Girls	Total
SCHOOL GR.	B	B	B
Diff. to Pre-Test	(0)	(0)	(0)
DIST. GR.	B	B	B
STATE GR.	B	B	B

CLASSWISE APPEARED

DETAILS	I STD	II STD	III STD	IV STD	V STD
BOYS	5	5	6	7	3
GIRLS	5	6	3	5	4
TOTAL	10	11	9	12	7
Diff. to Pre-Test	(-2)	(-1)	(+1)	(0)	(0)

CLASSWISE PERFORMANCE GRADES (% of marks)

DETAILS	I STD	II STD	III STD	IV STD	V STD
%	56	57	75	67	82
SCHOOL GR.	B	B	B	B	A
Diff. to Pre-Test	(0)	(0)	(0)	(0)	(+1)
DIST. GR.	B	B	B	B	B
STATE GR.	A	B	B	B	B



GRADEWISE PERFORMANCE (NO. OF STUDENTS)

ENGLISH	1 Std	2 Std	3 Std	4 Std	5 Std	TAMIL	1 Std	2 Std	3 Std	4 Std	5 Std
GR. A	0	3	5	2	5	GR. A	4	6	6	5	6
GR. B	3	2	2	7	0	GR. B	5	1	1	6	1
GR. C	6	3	1	2	2	GR. C	1	1	2	1	0
GR. D	1	3	1	1	0	GR. D	0	2	0	0	0
GR. E	0	0	0	0	0	GR. E	0	1	0	0	0

DEAL POST TEST 2019-20 - SCHOOL REPORT CARD

KARAIKAL
CEO

34040609902 **GMS - NEIVATCHERRY**

All Grades represent the following scorings in % *

GRADE A - >75	
GRADE B - 51 TO 75	* School Status Grade
GRADE C - 26 TO 50	represents the total
GRADE D - 10 TO 25	enrollment of the
GRADE E - <10	school (Not %)

Note: The Values given in the brackets denote the difference between the Pre and Post Test Scores.
(For Example: If the Pre-Test Grade is 'C' and the Post-Test Grade is 'A', then the progress is +2)

SCHOOL GRADE - AA

Status Gr. A (0)	Performance Gr. A(+1)
------------------	-----------------------

OVERALL PERFORMANCE GRADES

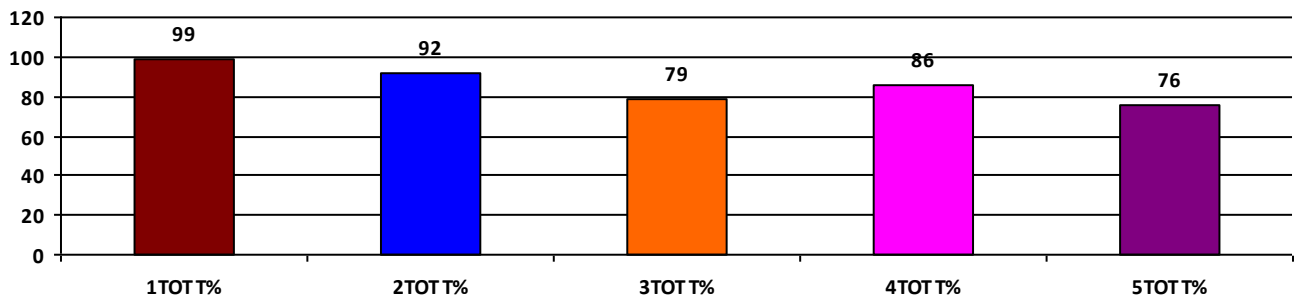
	Boys	Girls	Total
SCHOOL GR.	A	A	A
Diff. to Pre-Test	(+2)	(+1)	(+1)
DIST. GR.	B	B	B
STATE GR.	B	B	B

CLASSWISE APPEARED

DETAILS	I STD	II STD	III STD	IV STD	V STD
BOYS	6	13	7	6	11
GIRLS	4	7	12	7	11
TOTAL	10	20	19	13	22
Diff. to Pre-Test	(-1)	(+2)	(-2)	(0)	(+1)

CLASSWISE PERFORMANCE GRADES (% of marks)

DETAILS	I STD	II STD	III STD	IV STD	V STD
%	99	92	79	86	76
SCHOOL GR.	A	A	A	A	A
Diff. to Pre-Test	(0)	(+2)	(+2)	(0)	(+2)
DIST. GR.	B	B	B	B	B
STATE GR.	A	B	B	B	B



GRADEWISE PERFORMANCE (NO. OF STUDENTS)

ENGLISH	1 Std	2 Std	3 Std	4 Std	5 Std	TAMIL	1 Std	2 Std	3 Std	4 Std	5 Std
GR. A	10	17	11	9	12	GR. A	10	18	15	13	14
GR. B	0	1	4	4	8	GR. B	0	1	3	0	5
GR. C	0	2	3	0	2	GR. C	0	1	0	0	3
GR. D	0	0	0	0	0	GR. D	0	0	0	0	0
GR. E	0	0	1	0	0	GR. E	0	0	1	0	0

DEAL POST TEST 2019-20 - SCHOOL REPORT CARD

KARAIKAL
CEO

34040610605 **GMS - THIRUNALLAR**

All Grades represent the following scorings in % *

GRADE A - >75	* School Status Grade represents the total enrollment of the school (Not %)
GRADE B - 51 TO 75	
GRADE C - 26 TO 50	
GRADE D - 10 TO 25	
GRADE E - <10	

Note: The Values given in the brackets denote the difference between the Pre and Post Test Scores.
(For Example: If the Pre-Test Grade is 'C' and the Post-Test Grade is 'A', then the progress is +2)

SCHOOL GRADE - BB

Status Gr. B (0) Performance Gr. B(+1)

OVERALL PERFORMANCE GRADES

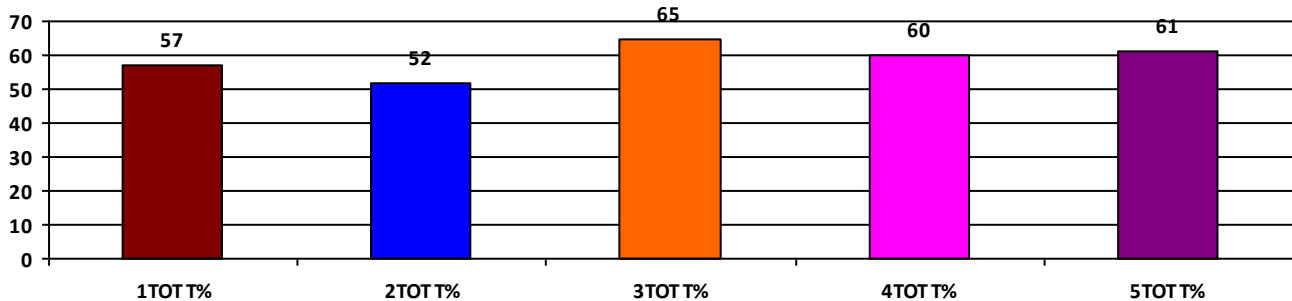
	Boys	Girls	Total
SCHOOL GR.	B	B	B
Diff. to Pre-Test	(+1)	(0)	(+1)
DIST. GR.	B	B	B
STATE GR.	B	B	B

CLASSWISE APPEARED

DETAILS	I STD	II STD	III STD	IV STD	V STD
BOYS	3	3	9	7	6
GIRLS	6	4	6	2	7
TOTAL	9	7	15	9	13
Diff. to Pre-Test	(0)	(0)	(+2)	(+1)	(+1)

CLASSWISE PERFORMANCE GRADES (% of marks)

DETAILS	I STD	II STD	III STD	IV STD	V STD
%	57	52	65	60	61
SCHOOL GR.	B	B	B	B	B
Diff. to Pre-Test	(+1)	(+1)	(0)	(0)	(+1)
DIST. GR.	B	B	B	B	B
STATE GR.	A	B	B	B	B



GRADEWISE PERFORMANCE (NO. OF STUDENTS)

ENGLISH	1 Std	2 Std	3 Std	4 Std	5 Std	TAMIL	1 Std	2 Std	3 Std	4 Std	5 Std
GR. A	0	1	0	0	2	GR. A	2	1	6	5	7
GR. B	5	4	9	2	6	GR. B	5	2	9	1	1
GR. C	3	1	6	7	2	GR. C	2	3	0	3	5
GR. D	1	0	0	0	3	GR. D	0	1	0	0	0
GR. E	0	1	0	0	0	GR. E	0	0	0	0	0

DEAL POST TEST 2019-20 - SCHOOL REPORT CARD

KARAIKAL
CEO

34040610804 HUSSAINIA GHS - NERAVY

All Grades represent the following scorings in % *

GRADE A - >75	
GRADE B - 51 TO 75	* School Status Grade
GRADE C - 26 TO 50	represents the total
GRADE D - 10 TO 25	enrollment of the
GRADE E - <10	school (Not %)

Note: The Values given in the brackets denote the difference between the Pre and Post Test Scores.
(For Example: If the Pre-Test Grade is 'C' and the Post-Test Grade is 'A', then the progress is +2)

SCHOOL GRADE - BB

Status Gr. B (0) Performance Gr. B(+1)

OVERALL PERFORMANCE GRADES

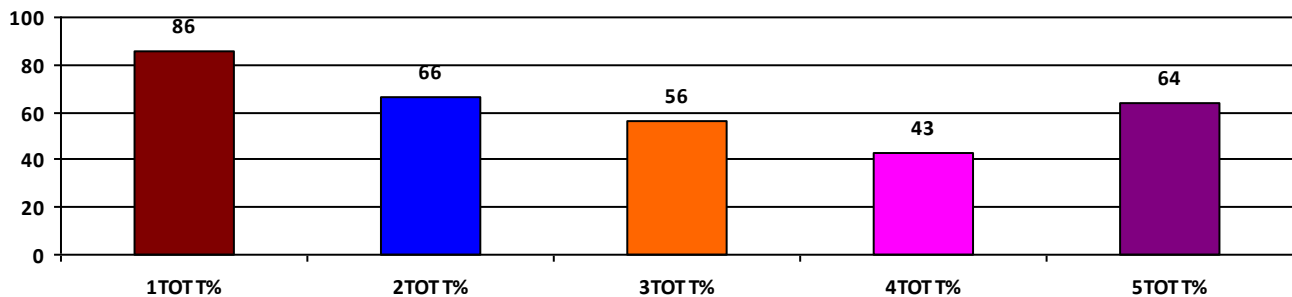
	Boys	Girls	Total
SCHOOL GR.	B	B	B
Diff. to Pre-Test	(+1)	(0)	(+1)
DIST. GR.	B	B	B
STATE GR.	B	B	B

CLASSWISE APPEARED

DETAILS	I STD	II STD	III STD	IV STD	V STD
BOYS	6	1	6	5	8
GIRLS	2	8	5	5	11
TOTAL	8	9	11	10	19
Diff. to Pre-Test	(+2)	(0)	(0)	(+3)	(+2)

CLASSWISE PERFORMANCE GRADES (% of marks)

DETAILS	I STD	II STD	III STD	IV STD	V STD
%	86	66	56	43	64
SCHOOL GR.	A	B	B	C	B
Diff. to Pre-Test	(+1)	(+1)	(+1)	(-1)	(0)
DIST. GR.	B	B	B	B	B
STATE GR.	A	B	B	B	B



GRADEWISE PERFORMANCE (NO. OF STUDENTS)

ENGLISH	1 Std	2 Std	3 Std	4 Std	5 Std	TAMIL	1 Std	2 Std	3 Std	4 Std	5 Std
GR. A	7	5	2	0	4	GR. A	7	3	2	2	10
GR. B	0	3	2	2	9	GR. B	0	3	7	4	4
GR. C	0	1	5	4	5	GR. C	1	2	2	1	4
GR. D	1	0	2	4	1	GR. D	0	1	0	3	1
GR. E	0	0	0	0	0	GR. E	0	0	0	0	0

DEAL POST TEST 2019-20 - SCHOOL REPORT CARD

KARAIKAL
CEO

34040610806 **BGMS - NERAVY**

All Grades represent the following scorings in % *

GRADE A - >75	* School Status Grade represents the total enrollment of the school (Not %)
GRADE B - 51 TO 75	
GRADE C - 26 TO 50	
GRADE D - 10 TO 25	
GRADE E - <10	

Note: The Values given in the brackets denote the difference between the Pre and Post Test Scores.
(For Example: If the Pre-Test Grade is 'C' and the Post-Test Grade is 'A', then the progress is +2)

SCHOOL GRADE - BB

Status Gr. B (0) Performance Gr. B(+1)

OVERALL PERFORMANCE GRADES

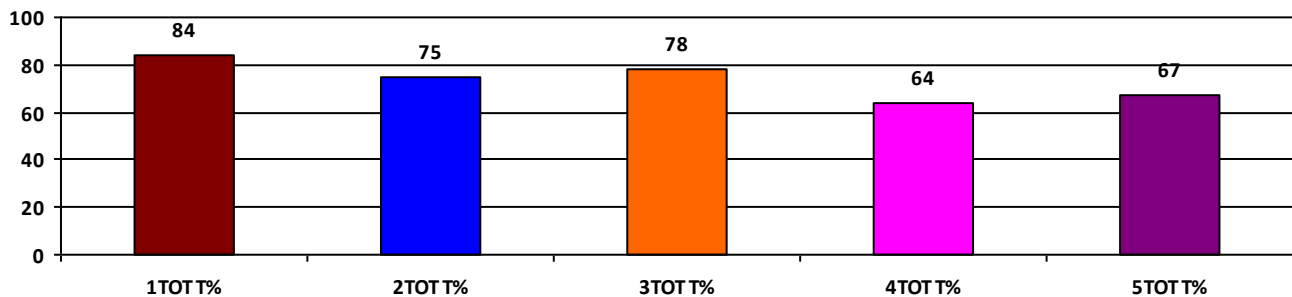
	Boys	Girls	Total
SCHOOL GR.	B	B	B
Diff. to Pre-Test	(+1)	(+1)	(+1)
DIST. GR.	B	B	B
STATE GR.	B	B	B

CLASSWISE APPEARED

DETAILS	I STD	II STD	III STD	IV STD	V STD
BOYS	6	7	9	7	9
GIRLS	1	5	6	5	10
TOTAL	7	12	15	12	19
Diff. to Pre-Test	(0)	(0)	(0)	(0)	(+3)

CLASSWISE PERFORMANCE GRADES (% of marks)

DETAILS	I STD	II STD	III STD	IV STD	V STD
%	84	75	78	64	67
SCHOOL GR.	A	B	A	B	B
Diff. to Pre-Test	(+1)	(+1)	(+1)	(+1)	(+1)
DIST. GR.	B	B	B	B	B
STATE GR.	A	B	B	B	B



GRADEWISE PERFORMANCE (NO. OF STUDENTS)

ENGLISH	1 Std	2 Std	3 Std	4 Std	5 Std	TAMIL	1 Std	2 Std	3 Std	4 Std	5 Std
GR. A	6	5	7	1	3	GR. A	7	6	9	7	9
GR. B	1	7	5	6	12	GR. B	0	6	6	2	9
GR. C	0	0	2	3	3	GR. C	0	0	0	2	0
GR. D	0	0	1	2	0	GR. D	0	0	0	1	1
GR. E	0	0	0	0	1	GR. E	0	0	0	0	0

DEAL POST TEST 2019-20 - SCHOOL REPORT CARD

KARAIKAL
CEO

34040610909 **GGHS - KOTTUCHERRY**

All Grades represent the following scorings in % *

GRADE A - >75	* School Status Grade represents the total enrollment of the school (Not %)
GRADE B - 51 TO 75	
GRADE C - 26 TO 50	
GRADE D - 10 TO 25	
GRADE E - <10	

Note: The Values given in the brackets denote the difference between the Pre and Post Test Scores.
(For Example: If the Pre-Test Grade is 'C' and the Post-Test Grade is 'A', then the progress is +2)

SCHOOL GRADE - CB

Status Gr. C (0) Performance Gr. B(+1)

OVERALL PERFORMANCE GRADES

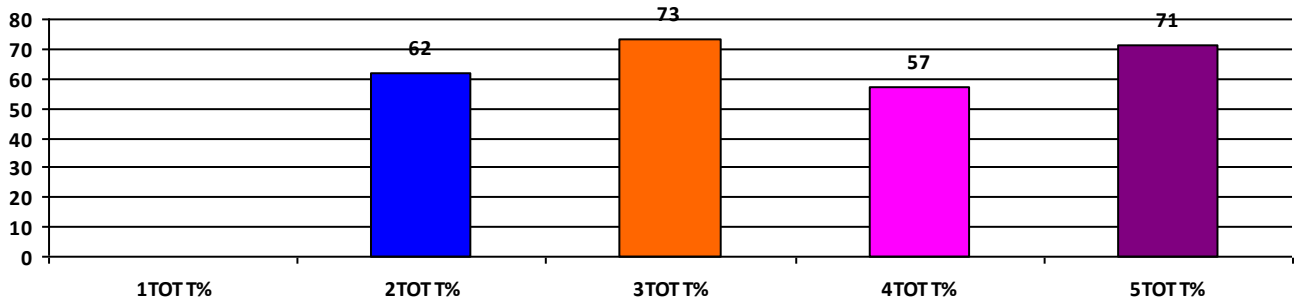
	Boys	Girls	Total
SCHOOL GR.	B	A	B
Diff. to Pre-Test	(+1)	(+1)	(+1)
DIST. GR.	B	B	B
STATE GR.	B	B	B

CLASSWISE APPEARED

DETAILS	I STD	II STD	III STD	IV STD	V STD
BOYS	0	3	4	5	5
GIRLS	0	4	3	2	5
TOTAL	0	7	7	7	10
Diff. to Pre-Test	(0)	(0)	(-1)	(+4)	(+2)

CLASSWISE PERFORMANCE GRADES (% of marks)

DETAILS	I STD	II STD	III STD	IV STD	V STD
%	NA	62	73	57	71
SCHOOL GR.	NA	B	B	B	B
Diff. to Pre-Test	(+8)	(+1)	(0)	(+1)	(+1)
DIST. GR.	B	B	B	B	B
STATE GR.	A	B	B	B	B



GRADEWISE PERFORMANCE (NO. OF STUDENTS)

ENGLISH	1 Std	2 Std	3 Std	4 Std	5 Std	TAMIL	1 Std	2 Std	3 Std	4 Std	5 Std
GR. A	0	1	2	1	3	GR. A	0	4	4	3	6
GR. B	0	3	4	2	4	GR. B	0	1	3	2	4
GR. C	0	3	1	3	3	GR. C	0	2	0	2	0
GR. D	0	0	0	1	0	GR. D	0	0	0	0	0
GR. E	0	0	0	0	0	GR. E	0	0	0	0	0

DEAL POST TEST 2019-20 - SCHOOL REPORT CARD

KARAIKAL
CEO

34040612001 **KARMAVEERAR KAMARAJAR GHS - KURUMBAGARAM**

All Grades represent the following scorings in % *

GRADE A - >75	
GRADE B - 51 TO 75	* School Status Grade
GRADE C - 26 TO 50	represents the total
GRADE D - 10 TO 25	enrollment of the
GRADE E - <10	school (Not %)

Note: The Values given in the brackets denote the difference between the Pre and Post Test Scores.
(For Example: If the Pre-Test Grade is 'C' and the Post-Test Grade is 'A', then the progress is +2)

SCHOOL GRADE - BB

Status Gr. B (0) Performance Gr. B(+1)

OVERALL PERFORMANCE GRADES

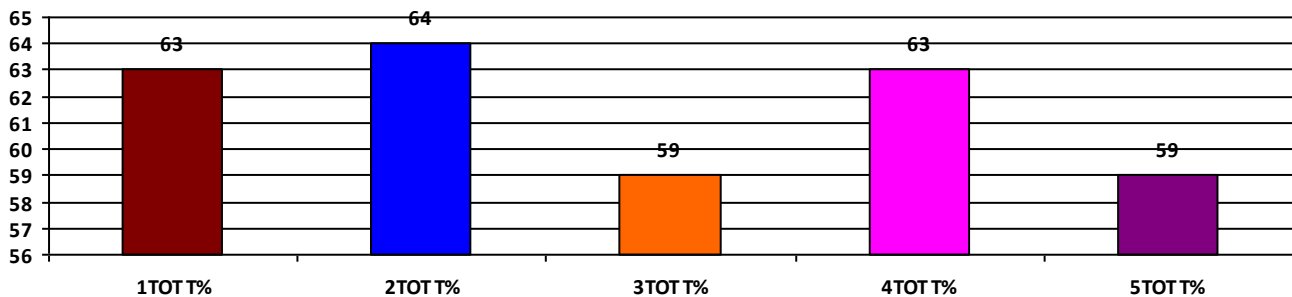
	Boys	Girls	Total
SCHOOL GR.	B	B	B
Diff. to Pre-Test	(+1)	(+1)	(+1)
DIST. GR.	B	B	B
STATE GR.	B	B	B

CLASSWISE APPEARED

DETAILS	I STD	II STD	III STD	IV STD	V STD
BOYS	8	6	3	5	9
GIRLS	3	6	9	5	4
TOTAL	11	12	12	10	13
Diff. to Pre-Test	(0)	(0)	(+1)	(-1)	(+1)

CLASSWISE PERFORMANCE GRADES (% of marks)

DETAILS	I STD	II STD	III STD	IV STD	V STD
%	63	64	59	63	59
SCHOOL GR.	B	B	B	B	B
Diff. to Pre-Test	(0)	(+1)	(0)	(+1)	(+1)
DIST. GR.	B	B	B	B	B
STATE GR.	A	B	B	B	B



GRADEWISE PERFORMANCE (NO. OF STUDENTS)

ENGLISH	1 Std	2 Std	3 Std	4 Std	5 Std	TAMIL	1 Std	2 Std	3 Std	4 Std	5 Std
GR. A	1	0	2	1	4	GR. A	2	9	8	4	5
GR. B	7	8	2	7	4	GR. B	8	0	2	5	4
GR. C	3	2	6	2	4	GR. C	1	2	1	0	2
GR. D	0	1	2	0	1	GR. D	0	1	0	1	2
GR. E	0	1	0	0	0	GR. E	0	0	1	0	0

DEAL POST TEST 2019-20 - SCHOOL REPORT CARD

KARAIKAL
CEO

34040612409 GMS - SENIAR STREET, T.R.PATTINAM

All Grades represent the following scorings in % *

GRADE A - >75	
GRADE B - 51 TO 75	* School Status Grade
GRADE C - 26 TO 50	represents the total
GRADE D - 10 TO 25	enrollment of the
GRADE E - <10	school (Not %)

Note: The Values given in the brackets denote the difference between the Pre and Post Test Scores.
(For Example: If the Pre-Test Grade is 'C' and the Post-Test Grade is 'A', then the progress is +2)

SCHOOL GRADE - BB

Status Gr. B (0)	Performance Gr. B (0)
------------------	-----------------------

OVERALL PERFORMANCE GRADES

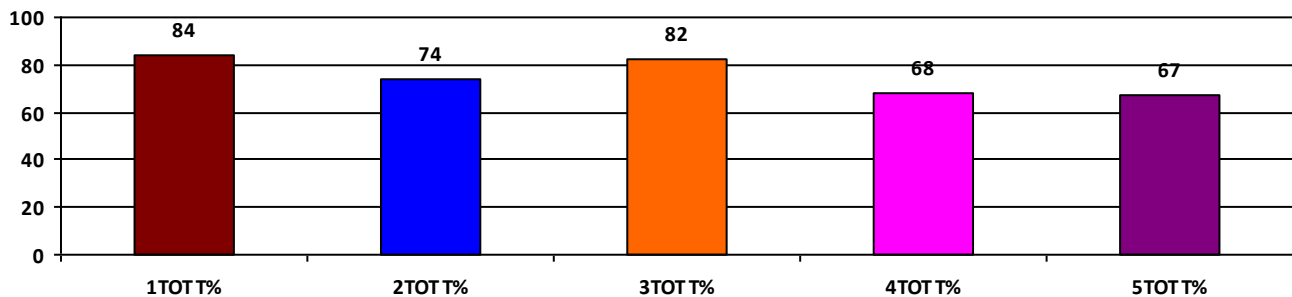
	Boys	Girls	Total
SCHOOL GR.	B	A	B
Diff. to Pre-Test	(0)	(+1)	(0)
DIST. GR.	B	B	B
STATE GR.	B	B	B

CLASSWISE APPEARED

DETAILS	I STD	II STD	III STD	IV STD	V STD
BOYS	2	4	4	4	12
GIRLS	9	3	4	4	7
TOTAL	11	7	8	8	19
Diff. to Pre-Test	(-4)	(-1)	(-1)	(0)	(-1)

CLASSWISE PERFORMANCE GRADES (% of marks)

DETAILS	I STD	II STD	III STD	IV STD	V STD
%	84	74	82	68	67
SCHOOL GR.	A	B	A	B	B
Diff. to Pre-Test	(0)	(0)	(+1)	(0)	(0)
DIST. GR.	B	B	B	B	B
STATE GR.	A	B	B	B	B



GRADEWISE PERFORMANCE (NO. OF STUDENTS)

ENGLISH	1 Std	2 Std	3 Std	4 Std	5 Std	TAMIL	1 Std	2 Std	3 Std	4 Std	5 Std
GR. A	10	5	3	1	9	GR. A	8	4	8	2	10
GR. B	1	2	5	6	5	GR. B	3	1	0	6	4
GR. C	0	0	0	1	4	GR. C	0	2	0	0	5
GR. D	0	0	0	0	1	GR. D	0	0	0	0	0
GR. E	0	0	0	0	0	GR. E	0	0	0	0	0

DEAL POST TEST 2019-20 - SCHOOL REPORT CARD

KARAIKAL
CEO

34040612410 GMS - T.R.PATTINAM

All Grades represent the following scorings in % *

GRADE A - >75	
GRADE B - 51 TO 75	* School Status Grade
GRADE C - 26 TO 50	represents the total
GRADE D - 10 TO 25	enrollment of the
GRADE E - <10	school (Not %)

Note: The Values given in the brackets denote the difference between the Pre and Post Test Scores.
(For Example: If the Pre-Test Grade is 'C' and the Post-Test Grade is 'A', then the progress is +2)

SCHOOL GRADE - BB

Status Gr. B (0) Performance Gr. B (0)

OVERALL PERFORMANCE GRADES

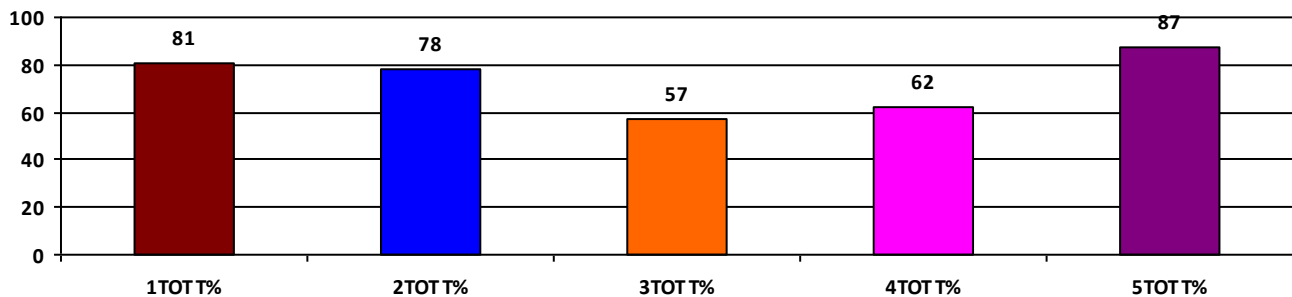
	Boys	Girls	Total
SCHOOL GR.	B	A	B
Diff. to Pre-Test	(+1)	(+1)	(0)
DIST. GR.	B	B	B
STATE GR.	B	B	B

CLASSWISE APPEARED

DETAILS	I STD	II STD	III STD	IV STD	V STD
BOYS	3	5	10	12	12
GIRLS	7	4	8	4	8
TOTAL	10	9	18	16	20
Diff. to Pre-Test	(-1)	(0)	(+1)	(-1)	(+1)

CLASSWISE PERFORMANCE GRADES (% of marks)

DETAILS	I STD	II STD	III STD	IV STD	V STD
%	81	78	57	62	87
SCHOOL GR.	A	A	B	B	A
Diff. to Pre-Test	(+1)	(+2)	(0)	(+1)	(+1)
DIST. GR.	B	B	B	B	B
STATE GR.	A	B	B	B	B



GRADEWISE PERFORMANCE (NO. OF STUDENTS)

ENGLISH	1 Std	2 Std	3 Std	4 Std	5 Std	TAMIL	1 Std	2 Std	3 Std	4 Std	5 Std
GR. A	7	5	2	3	15	GR. A	8	5	8	9	20
GR. B	1	3	4	6	5	GR. B	1	3	5	5	0
GR. C	2	1	10	4	0	GR. C	1	1	4	0	0
GR. D	0	0	1	2	0	GR. D	0	0	1	2	0
GR. E	0	0	1	1	0	GR. E	0	0	0	0	0

DEAL POST TEST 2019-20 - SCHOOL REPORT CARD

KARAIKAL
CEO

34040612614 GHS - KOTHUKULAM

All Grades represent the following scorings in % *

GRADE A - >75	
GRADE B - 51 TO 75	* School Status Grade
GRADE C - 26 TO 50	represents the total
GRADE D - 10 TO 25	enrollment of the
GRADE E - <10	school (Not %)

Note: The Values given in the brackets denote the difference between the Pre and Post Test Scores.
(For Example: If the Pre-Test Grade is 'C' and the Post-Test Grade is 'A', then the progress is +2)

SCHOOL GRADE - AB

Status Gr. A (0)	Performance Gr. B(+1)
------------------	-----------------------

OVERALL PERFORMANCE GRADES

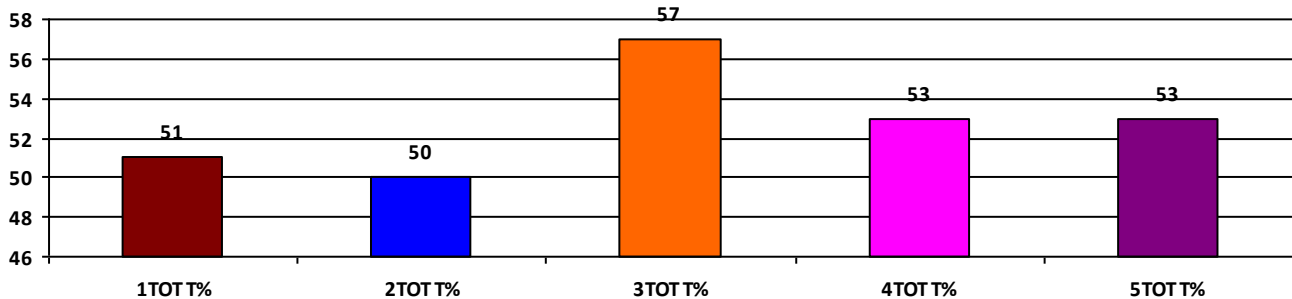
	Boys	Girls	Total
SCHOOL GR.	B	B	B
Diff. to Pre-Test	(+1)	(+1)	(+1)
DIST. GR.	B	B	B
STATE GR.	B	B	B

CLASSWISE APPEARED

DETAILS	I STD	II STD	III STD	IV STD	V STD
BOYS	23	14	14	16	14
GIRLS	11	16	15	17	25
TOTAL	34	30	29	33	39
Diff. to Pre-Test	(0)	(-2)	(+2)	(0)	(+8)

CLASSWISE PERFORMANCE GRADES (% of marks)

DETAILS	I STD	II STD	III STD	IV STD	V STD
%	51	50	57	53	53
SCHOOL GR.	B	C	B	B	B
Diff. to Pre-Test	(+1)	(0)	(+1)	(+1)	(+1)
DIST. GR.	B	B	B	B	B
STATE GR.	A	B	B	B	B



GRADEWISE PERFORMANCE (NO. OF STUDENTS)

ENGLISH	1 Std	2 Std	3 Std	4 Std	5 Std	TAMIL	1 Std	2 Std	3 Std	4 Std	5 Std
GR. A	8	0	3	3	7	GR. A	2	3	8	17	9
GR. B	9	20	14	13	16	GR. B	12	6	13	3	15
GR. C	16	9	12	9	6	GR. C	15	17	7	7	6
GR. D	0	1	0	8	8	GR. D	4	4	1	6	5
GR. E	1	0	0	0	2	GR. E	1	0	0	0	4

DEAL POST TEST 2019-20 - SCHOOL REPORT CARD

KARAIKAL
CEO

34040612619 GHS - AKKARAIVATTAM

All Grades represent the following scorings in % *

GRADE A - >75	
GRADE B - 51 TO 75	* School Status Grade
GRADE C - 26 TO 50	represents the total
GRADE D - 10 TO 25	enrollment of the
GRADE E - <10	school (Not %)

Note: The Values given in the brackets denote the difference between the Pre and Post Test Scores.
(For Example: If the Pre-Test Grade is 'C' and the Post-Test Grade is 'A', then the progress is +2)

SCHOOL GRADE - CB

Status Gr. C (0) Performance Gr. B(+1)

OVERALL PERFORMANCE GRADES

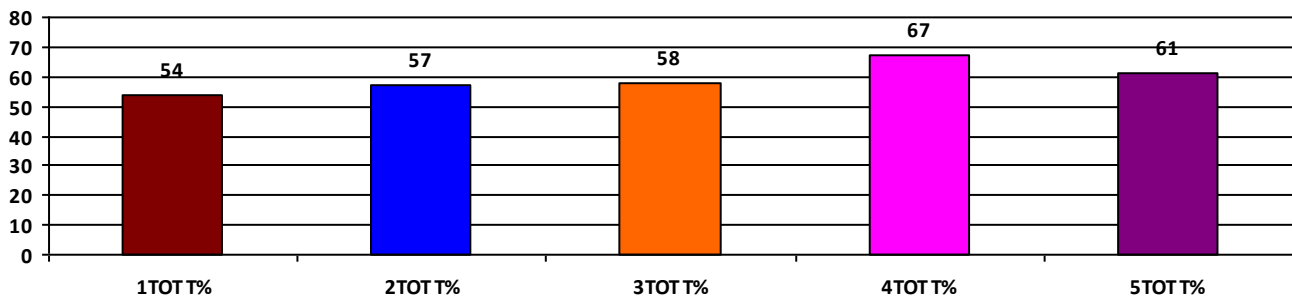
	Boys	Girls	Total
SCHOOL GR.	C	B	B
Diff. to Pre-Test	(0)	(+1)	(+1)
DIST. GR.	B	B	B
STATE GR.	B	B	B

CLASSWISE APPEARED

DETAILS	I STD	II STD	III STD	IV STD	V STD
BOYS	2	2	5	1	4
GIRLS	2	7	6	6	5
TOTAL	4	9	11	7	9
Diff. to Pre-Test	(+2)	(+2)	(0)	(-1)	(-1)

CLASSWISE PERFORMANCE GRADES (% of marks)

DETAILS	I STD	II STD	III STD	IV STD	V STD
%	54	57	58	67	61
SCHOOL GR.	B	B	B	B	B
Diff. to Pre-Test	(+1)	(+1)	(+1)	(+1)	(0)
DIST. GR.	B	B	B	B	B
STATE GR.	A	B	B	B	B



GRADEWISE PERFORMANCE (NO. OF STUDENTS)

ENGLISH	1 Std	2 Std	3 Std	4 Std	5 Std	TAMIL	1 Std	2 Std	3 Std	4 Std	5 Std
GR. A	0	0	0	4	1	GR. A	0	4	7	4	5
GR. B	2	5	1	0	4	GR. B	4	1	3	1	3
GR. C	1	2	9	3	3	GR. C	0	2	1	2	0
GR. D	1	2	1	0	1	GR. D	0	2	0	0	0
GR. E	0	0	0	0	0	GR. E	0	0	0	0	1

DEAL POST TEST 2019-20 - SCHOOL REPORT CARD

KARAIKAL
CEO

34040612803 GHS - Oozhiapathu

All Grades represent the following scorings in % *

GRADE A - >75	
GRADE B - 51 TO 75	* School Status Grade
GRADE C - 26 TO 50	represents the total
GRADE D - 10 TO 25	enrollment of the
GRADE E - <10	school (Not %)

Note: The Values given in the brackets denote the difference between the Pre and Post Test Scores.
(For Example: If the Pre-Test Grade is 'C' and the Post-Test Grade is 'A', then the progress is +2)

SCHOOL GRADE - BB

Status Gr. B (0)	Performance Gr. B(+1)
------------------	-----------------------

OVERALL PERFORMANCE GRADES

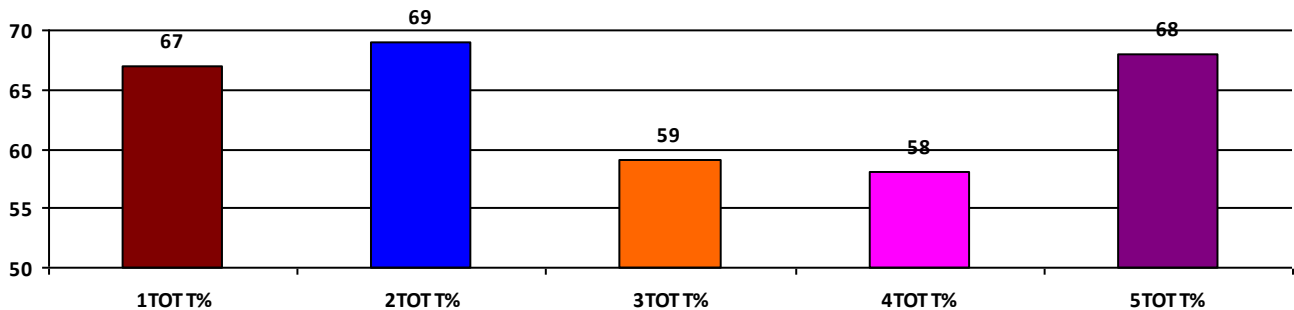
	Boys	Girls	Total
SCHOOL GR.	B	B	B
Diff. to Pre-Test	(+2)	(+1)	(+1)
DIST. GR.	B	B	B
STATE GR.	B	B	B

CLASSWISE APPEARED

DETAILS	I STD	II STD	III STD	IV STD	V STD
BOYS	5	2	9	9	4
GIRLS	4	5	7	3	7
TOTAL	9	7	16	12	11
Diff. to Pre-Test	(-1)	(-1)	(-1)	(0)	(0)

CLASSWISE PERFORMANCE GRADES (% of marks)

DETAILS	I STD	II STD	III STD	IV STD	V STD
%	67	69	59	58	68
SCHOOL GR.	B	B	B	B	B
Diff. to Pre-Test	(+1)	(+1)	(+2)	(+2)	(+1)
DIST. GR.	B	B	B	B	B
STATE GR.	A	B	B	B	B



GRADEWISE PERFORMANCE (NO. OF STUDENTS)

ENGLISH	1 Std	2 Std	3 Std	4 Std	5 Std	TAMIL	1 Std	2 Std	3 Std	4 Std	5 Std
GR. A	4	1	2	1	0	GR. A	4	6	3	4	8
GR. B	3	4	7	7	8	GR. B	4	0	9	5	3
GR. C	1	1	6	3	3	GR. C	0	1	3	2	0
GR. D	0	0	1	1	0	GR. D	0	0	1	1	0
GR. E	1	1	0	0	0	GR. E	1	0	0	0	0

DEAL POST TEST 2019-20 - SCHOOL REPORT CARD

KARAIKAL
CEO

34040613002 **GHS - VARICHIKUDY**

All Grades represent the following scorings in % *

GRADE A - >75	
GRADE B - 51 TO 75	* School Status Grade
GRADE C - 26 TO 50	represents the total
GRADE D - 10 TO 25	enrollment of the
GRADE E - <10	school (Not %)

Note: The Values given in the brackets denote the difference between the Pre and Post Test Scores.
(For Example: If the Pre-Test Grade is 'C' and the Post-Test Grade is 'A', then the progress is +2)

SCHOOL GRADE - BB

Status Gr. B (0) Performance Gr. B(+1)

OVERALL PERFORMANCE GRADES

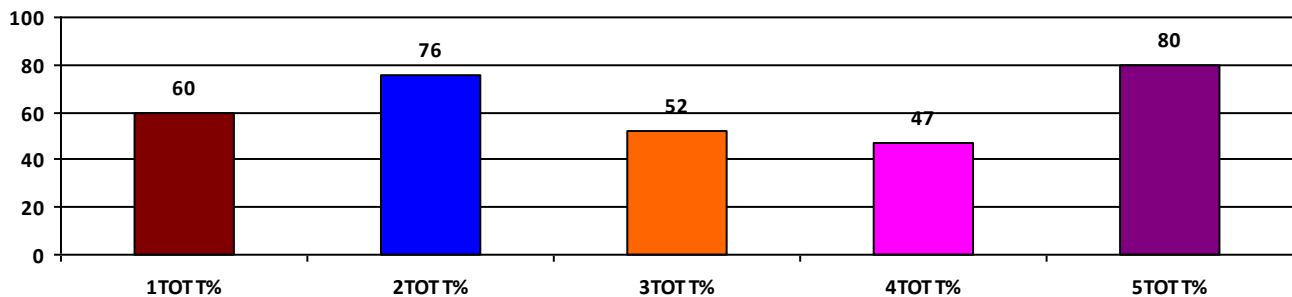
	Boys	Girls	Total
SCHOOL GR.	B	B	B
Diff. to Pre-Test	(+1)	(0)	(+1)
DIST. GR.	B	B	B
STATE GR.	B	B	B

CLASSWISE APPEARED

DETAILS	I STD	II STD	III STD	IV STD	V STD
BOYS	2	5	6	4	9
GIRLS	4	5	3	7	9
TOTAL	6	10	9	11	18
Diff. to Pre-Test	(+1)	(+1)	(0)	(+3)	(0)

CLASSWISE PERFORMANCE GRADES (% of marks)

DETAILS	I STD	II STD	III STD	IV STD	V STD
%	60	76	52	47	80
SCHOOL GR.	B	A	B	C	A
Diff. to Pre-Test	(0)	(+2)	(+1)	(-1)	(+1)
DIST. GR.	B	B	B	B	B
STATE GR.	A	B	B	B	B



GRADEWISE PERFORMANCE (NO. OF STUDENTS)

ENGLISH	1 Std	2 Std	3 Std	4 Std	5 Std	TAMIL	1 Std	2 Std	3 Std	4 Std	5 Std
GR. A	1	5	0	1	12	GR. A	0	5	4	3	13
GR. B	3	4	3	3	4	GR. B	6	3	1	3	3
GR. C	2	1	3	1	2	GR. C	0	2	4	1	2
GR. D	0	0	3	6	0	GR. D	0	0	0	3	0
GR. E	0	0	0	0	0	GR. E	0	0	0	1	0